



Presto! MediaPlayer

User Guide



Copyright ©1996, NewSoft, Inc.
All Rights Reserved.

Presto! MediaPlayer License Agreement

Copyright

Presto! MediaPlayer for Windows and its packaging design are owned and copyrighted by NewSoft and are protected by United States laws and international treaties. NewSoft grants you a limited license to use Presto! MediaPlayer on a single personal computer. Presto! MediaPlayer may only be duplicated for back-up or archival purposes. The written materials accompanying the Presto! MediaPlayer may not be duplicated for any purpose. You may not rent or lease Presto! MediaPlayer, but you may transfer Presto! MediaPlayer and accompanying written materials on a permanent basis provided you retain no copies and the recipient agrees to the terms of this agreement. You may not reverse engineer, decompile, or disassemble Presto! MediaPlayer.

Limited Warranty

NewSoft warrants that the Presto! MediaPlayer will perform substantially in accordance with the accompanying written materials under normal use and service. NewSoft's entire liability and your exclusive remedy shall be the replacement of your copy of Presto! MediaPlayer. A shipping and handling charge will apply to all warranty returns. This warranty is void if failure of Presto! MediaPlayer has resulted from accident, abuse, or misapplication. This remedy is not available outside the United States. NewSoft disclaims all other warranties, either express or implied, including but not limited to implied warranties of merchantability and fitness for a particular purpose, with respect to Presto! MediaPlayer, the accompanying written materials, or any other material related to the product. The limited warranty gives you specific legal rights. You may have others, which vary from state to state.

No Liability for Consequential Damages

In no event shall NewSoft or its suppliers be liable for any damages whatsoever, including, without limitation, damages for loss of business

profits, business interruption, loss of business information, or other pecuniary loss arising out of the use or inability to use this NewSoft product, even if NewSoft has been advised of the possibility of such damages. Because some states do not allow the limitation of liability for consequential or incidental damages, this limitation may not apply to you.

US Government Restricted Rights

Presto! MediaPlayer and its documentation are provided with restricted rights. Use, duplication, or disclosure by the Government is subject to restriction as set forth in subparagraph (c) (1) (ii) of The Rights in Technical Data and Computer Software clause at 52.227.7013. Contractor/manufacturer is NewSoft Inc., 47400 Seabridge Drive, Fremont, CA 94538.

All the sample images and its electronic files included in the documentation and distribution diskettes are copyrighted by their respective photographers and not allowed to be copied or reproduced in any manner.

Trademarks

IBM, PC, AT, PS/2, CGA, EGA, and VGA are registered trademarks of International Business Machines Corporation.

MS-DOS, Windows, and Microsoft are registered trademarks of Microsoft Corporation.

All other trademarks are the properties of their respective owners.

Libraries

Portions of the imaging technology of this product are copyrighted by AccuSoft Corporation.

PCD (Photo CD file format) is from Eastman Kodak Corporation.

Introduction

Presto! MediaPlayer is a 3-in-1 multimedia on-screen CD player which can play all kinds of CDs on your PC, including Video CD, Karaoke CD, CD-I, music CD (CD-DA), CD-ROM, etc. With its player-simulated interface, you can easily enjoy the CD programs of images, videos and audio with a few simple clicks. It can also perform slide shows with media files of different formats, such as PCD, BMP, TIF, JPG, PCX, WMF, AVI, MPG, FLC, FLI, WAV, MID, etc.

System Requirements

The following hardware and software devices are required to run Presto! MediaPlayer:

- An IBM PC 386, 486 or compatible computer
- At least 4 MB of RAM
- A 3.5" floppy disk drive
- A CD-ROM drive
- A hard disk drive with 3 MB free space for installation
- A VGA, Super VGA, HiColor or 24-bit display board and an appropriate monitor
- A Windows-compatible pointing device (mouse, trackball, etc.)
- A Windows-compatible sound board and external speakers (optional for audio playback)
- A MPEG decoding board (optional for MPEG playback)
- MS Windows 3.1
- MS DOS or PC DOS, version 3.3 or later

Installation

Before installing Presto! MediaPlayer, make sure you have installed all the Windows drivers for your hardware devices.

Follow the steps below to install Presto! MediaPlayer:

1. Insert the Presto! MediaPlayer into your CD-ROM drive.
2. Start Microsoft Windows.
3. Choose Run from the Start Menu.

4. In the Command Line box, type:

F:\Install OR **G:\Install**

depending on which partition is designated as your CD-ROM drive.

5. Click on the [OK] button. The Installation Program dialog box will appear.

The installation program will install the software on your first hard drive (C). Click on the [OK] button to continue the installation. If you want to install the software on a different drive, enter the drive letter and click on the [OK] button.

6. If you haven't installed Microsoft Video for Windows Run-time driver, answer Yes and continue installation when prompted.

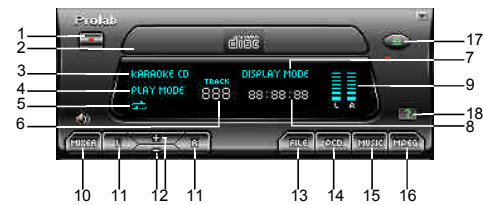
After installation, an folder containing Presto! MediaPlayer will appear on your hard drive.

Operation

Double clicking the Presto! MediaPlayer icon invokes the main panel of the CD player. You can select to play MPEG video, music or media files with the buttons located at the lower right corner of the main panel. A CD player corresponding to your selection will appear to the right of the main panel. If you do not select a CD type, the appropriate CD player will be loaded automatically after you have inserted a CD into your CD-ROM drive.

On the main panel, you may click on the Eject button to open the CD loader of your CD-ROM drive and click again to close the CD loader. The operation of playing a CD is as easy as operating a real home entertainment machine. You can place the mouse pointer everywhere on the main

Main Panel



Media CD Player

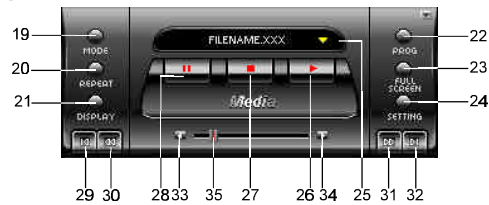
Music CD Player

1. Power Off: closes Presto! MediaPlayer.
2. CD Loader: it can be opened or closed to insert or remove CDs.
3. CD Type Indicator: shows the type of CD inserted in the CD-ROM drive.
4. Play Mode Indicator: shows the play mode as Normal, Programmed or Random.
5. Repeat Indicator: indicates repeat playing status.
6. Track Number Indicator: indicates the number of current played track.
7. Display Mode Indicator: indicates the current timer display mode.
8. Timer Indicator: indicates time according to the current timer display mode.
9. Volume Indicator: indicates the volume level set by Balance and Volume buttons.
10. Mixer Button: invokes the mixer setting dialog box for configuring the sound channels.
11. Balance Buttons: adjusts the volume of the left and right channels.
12. Volume Buttons: adjusts the volume of external speakers.
13. File Player Button: loads the Media CD player.
14. PCD Player Button: loads the Photo CD player. (This function is disabled in current version.)
15. Music Player Button: loads the Music CD (CD-Audio) player.
16. MPEG Player Button: loads the MPEG CD Player for video CD, Karaoke CD and CD-I.

17. Help Button: displays detailed on-line help messages.

18. Eject Button: opens or closes the CD Loader.

MPEG CD Player



19. Play Mode Setting Button: changes the play mode to Normal, Programmed or Random.

20. Repeat Mode Setting Button: sets the media files being played repeatedly or not.

21. Display Mode Setting Button: changes the timer display mode to one of the five modes.

22. Program Setting Button: displays the Program Panel dialog box for selecting files as collections and arranging playing sequence.

23. Full Screen Button: plays the media files in full screen mode.

24. Setting Button: displays a dialog box for setting the configuration of slide shows.

25. File List Panel: Click the yellow arrow to display the file list you have programmed to play; click on a selected file name to play the specific file immediately.

26. Play Button: plays the selected media files in sequence.

27. Stop Button: stops playing the media files.

28. Pause Button: pauses playing the media files.

29. Home Button: goes to the first media file in the programmed file list for playing.

30. Previous Button: goes to the previous media file in the programmed file list for playing.

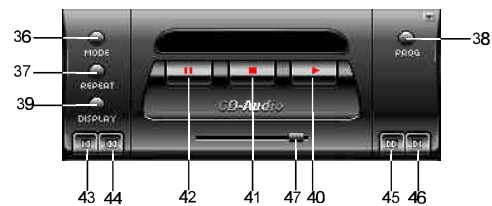
31. Next Button: goes to the next media file in the programmed file list for playing.

32. End Button: goes to the last media file in the programmed file list for playing.

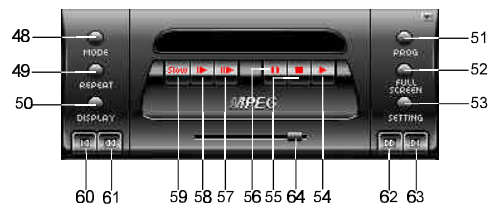
33. Previous Frame Button: goes to the previous frame in the current playing file.

34. Next Frame Button: goes to the next frame in the current playing file.

35. Frame Slider: Drag to locate the desired frame in the current playing file.



- | | |
|--|--|
| 36. Play Mode Setting Button: changes the play mode to Normal, Programmed or Random. | 42. Pause Button: pauses playing the music. |
| 37. Repeat Mode Setting Button: sets the music being played repeatedly or not. | 43. Home Button: goes to the first track on the CD or in the programmed track list for playing. |
| 38. Program Setting Button: displays the Program Panel dialog box for selecting tracks to play and arranging playing sequence. | 44. Previous Button: goes to the previous track on the CD or in the programmed track list for playing. |
| 39. Display Mode Setting Button: changes the timer display mode to one of the five modes. | 45. Next Button: goes to the next track on the CD or in the programmed track list for playing. |
| 40. Play Button: plays the music tracks in sequence. | 46. End Button: goes to the last track on the CD or in the programmed track list for playing. |
| 41. Stop Button: stops playing the music. | 47. Track Slider: Drag to locate the desired track on the CD. |



- | | |
|--|--|
| 48. Play Mode Setting Button: changes the play mode to Normal, Programmed or Random. | 58. Double Speed Button: plays the video in double speed. |
| 49. Repeat Mode Setting Button: sets the video being played repeatedly or not. | 59. Slow Speed Button: plays the video in slow speed. |
| 50. Display Mode Setting Button: changes the timer display mode to one of the five modes. | 60. Home Button: goes to the first track on the CD or in the programmed track list for playing. |
| 51. Program Setting Button: displays the Program Panel dialog box for selecting tracks to play and arranging playing sequence. | 61. Previous Button: goes to the previous track on the CD or in the programmed track list for playing. |
| 52. Full Screen Button: plays the video in full screen mode. | 62. Next Button: goes to the next track on the CD or in the programmed track list for playing. |
| 53. Setting Button: displays a dialog box for setting the brightness, contrast, hue, saturation and overlay position of video. | 63. End Button: goes to the last track on the CD or in the programmed track list for playing. |
| 54. Play Button: plays the video in normal speed. | 64. Track Slider: Drag to locate the desired track on the CD. |
| 55. Stop Button: stops playing the video. | |
| 56. Pause Button: pauses playing the video. | |
| 57. Quadruple Speed Button: plays the video in quadruple speed. | |